

# TATTOO

TOO GOOD  
TO BE TRUE

THE NEW FRONTIER  
OF HAIR CUTTING





**TATTOO** the new professional hair clipper from **KIEPE made in Italy** design with innovative technology, where ease of use and high performance come together to guarantee endless style of possibilities.



ADVANCED TECHNOLOGY  
FOR IMPECCABLE RESULTS

Tattoo is a Cord-Cordless hair clipper  
designed to meet **every cutting need**, for  
both **men and women**.




## TATTOO

Its **innovative engine** and special **cooling system** ensure better use and **less wear** of the instrument.



The **5-setting** side lever with “Click Clack mode” system allows shaving from 0.8 mm, 1.4 mm, 2.0 mm, 2.8 to 3.5 mm

An integrated system allows you to switch from a click-clack lever to a **Free Style** lever.



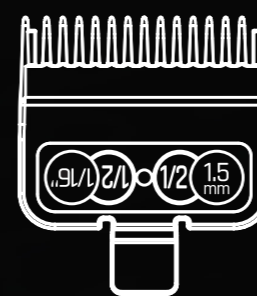
**Tattoo** is equipped with a **silent** and **powerful motor** capable of reaching the speed of **7200 rpm** for a precise, fast and defined cut.  
Its duration is up to **2 times higher** than that of **normal engines** on the market.

Long **battery** life, **240 minutes** of continuous work and full charge in 45 minutes.

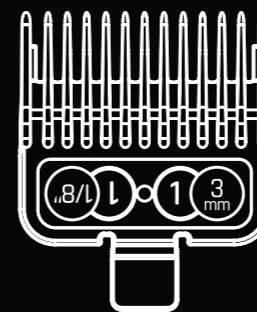


Tattoo has a removable **ring** to facilitate **storage** and make it more practical.

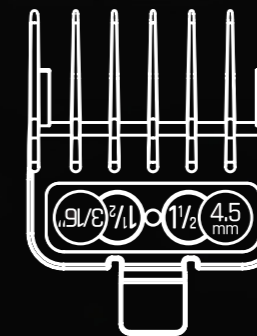
THE TATTOO CLIPPER HAS 10 PCS GARDS



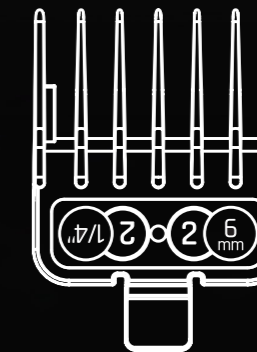
1/2# Comb  
1/16"(1.5mm)



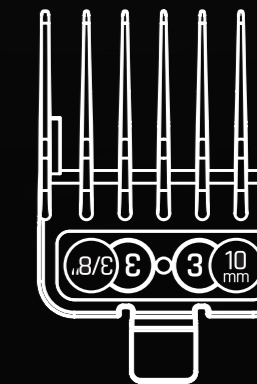
1# Comb  
1/8"(3mm)



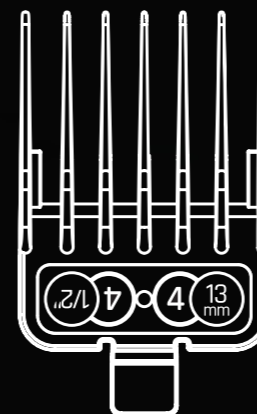
1 1/2# Comb  
3/16"(4.5mm)



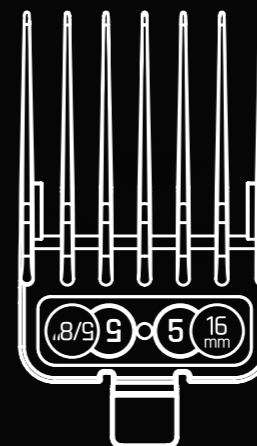
2# Comb  
1/4"(6mm)



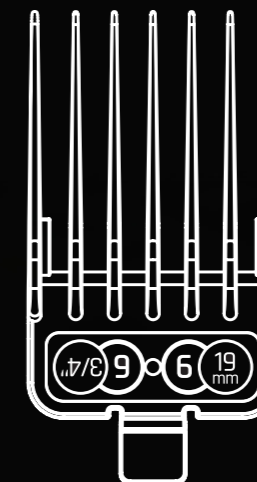
3# Comb  
3/8"(10mm)



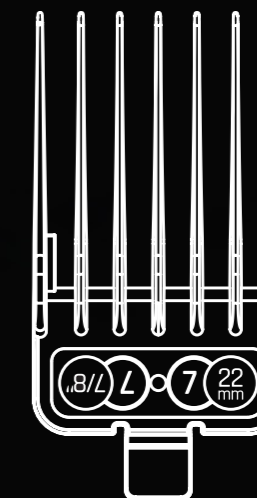
4# Comb  
1/2"(13mm)



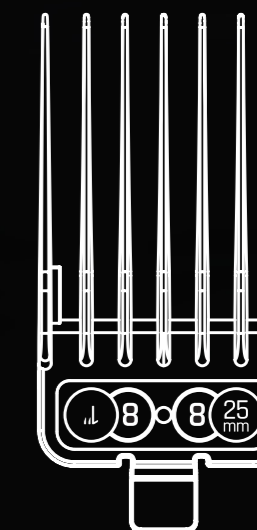
5# Comb  
5/8"(16mm)



6# Comb  
3/4"(19mm)



7# Comb  
7/8"(22mm)



8# Comb  
1"(25mm)

# mini TATTOO

Two high Kiepe technology products,  
one for cutting and the other for  
trimming, the two **designed**  
to offer maximum **flexibility** and  
**absolute quality** of results.

CODE: #6343



CODE: #6342



# TATTOO



mini  
TATTOO

Also introducing the **Mini Tattoo finishing** trimmer meeting highest **quality** standards in terms of **precision** during use.

mini  
TATTOO



Its **ergonomic** shape and compact design are ideal for making light touch-ups, adjusting very **short** cuts and defining the contours of the **beard, neck** and **ears**.

The technology of the blades allows you to **outline** thin **lines** and details and to create refined designs for sophisticated **original** **hair looks**.

# TATTOO

## mini TATTOO

The **TATTOO** clipper and **mini TATTOO** are supplied with revolutionary blades: they are made of die-cast steel for prolonged use and a sharpening duration **500 times longer** than the classic traditional steel blades; allowing you to make adjustable cuts, ensuring maximum control in beard and hair care to meet the needs of even the most demanding professionals.

The **Mini TATTOO** has ultra sharp and **360 ° exposed T-shaped** blades so you can create incredible designs and cut without any obstacles. In addition, with the **Fresh Blade** technology the blade remains fresh and sharp even after prolonged use.



The blades do not heat up thanks to the integrated **Fresh Blade** system that allows heat to dissipate quickly

The advanced **locking function** lever on the **Tattoo** clipper you keeps the adjustment safe and **stable during** a extended period of use.



TATTOO

mini  
TATTOO



Buy it now on  
[www.kiepe.it](http://www.kiepe.it)